



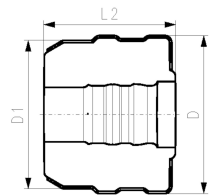
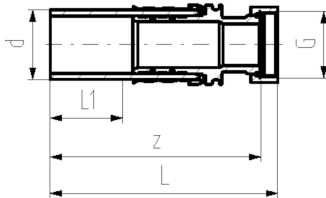
COOL-FIT 4.0 Übergangsfitting PE-Edelstahl mit loser Überwurfmutter G

Ausführung:

- Stutzenfitting PE100 SDR11, metrisch mit freiem Ende
- Edelstahl 1.4404 / 316L mit Innengewinde G
- Inklusive Flachdichtung EPDM
- Einschliesslich Isolationshalbschalen

Anmerkung:

verfügbar ab Q4 2018



d (mm)	G (mm)	PN (bar)	Code	Gewicht (kg)	D (mm)	L (mm)	L1 (mm)	L12 (mm)	z (mm)
32	1/2"	16	738 943 308	0.250	104	133	36	101	126
32	3/4"	16	738 943 318	0.264	104	135	36	101	129
32	1"	16	738 943 328	0.296	104	135	36	101	129
40	1 1/4"	16	738 943 309	0.595	128	155	40	91	148
40	1 1/2"	16	738 943 319	0.655	128	157	40	91	148
50	1 1/2"	16	738 943 310	0.820	138	164	44	96	154
63	2"	16	738 943 311	1.307	149	186	48	103	170

The technical data are not binding. They neither constitute expressly warranted characteristics nor guaranteed properties nor a guaranteed durability. They are subject to modification. Our General Terms of Sale apply.

Georg Fischer Piping Systems Ltd, Postfach, CH-8201 Schaffhausen/Switzerland

Phone +41 -(0)52-631 1111

e-mail: info.ps@georgfischer.com

Internet: <http://www.gfps.com>