

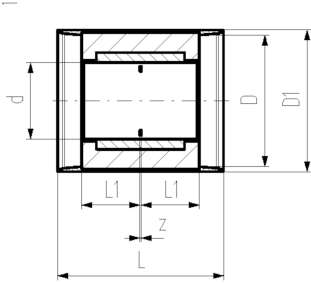


## COOL-FIT 4.0 Muffe, d32-d225

### Ausführung:

- Vorisoliertes PE100 SDR 11 metrisch
- Isolation aus GF HE Schaum
- Schlagfest Farbe: schwarz
- Integrierte Dichtungslippe. Für eine feuchtigkeits- und dampfdichte Verbindung

\*d75/140 + d90/160 verfügbar ab 12.2018



d/D (mm)	DN (mm)	PN (bar)	Code	SP	Gewicht (kg)	GP	L (mm)	L1 (mm)	z (mm)	D1 (mm)
32/90	25	16	<b>738 913 108</b>	1	0.089	10	127	36	5	97
40/110	32	16	<b>738 913 109</b>	1	0.129	8	133	40	3	117
50/110	40	16	<b>738 913 110</b>	1	0.169	6	141	44	3	117
63/125	50	16	<b>738 913 111</b>	1	0.240	8	149	48	3	132
* 75/140	65	16	<b>738 913 112</b>	1	0.520	4	163	55	3	147
* 90/160	80	16	<b>738 913 113</b>	1	0.750	2	178	62	4	168
110/180	100	16	<b>738 913 114</b>	1	0.831	2	198	72	4	188
160/250	150	16	<b>738 913 117</b>	1	1.726	1	233	90	3	258
225/315	200	16	<b>738 913 120</b>	1	3.783	2	275	110	5	324

The technical data are not binding. They neither constitute expressly warranted characteristics nor guaranteed properties nor a guaranteed durability. They are subject to modification. Our General Terms of Sale apply.

Georg Fischer Piping Systems Ltd, Postfach, CH-8201 Schaffhausen/Switzerland

Phone +41 -(0)52-631 1111

e-mail: [info.ps@georgfischer.com](mailto:info.ps@georgfischer.com)

Internet: <http://www.gfps.com>